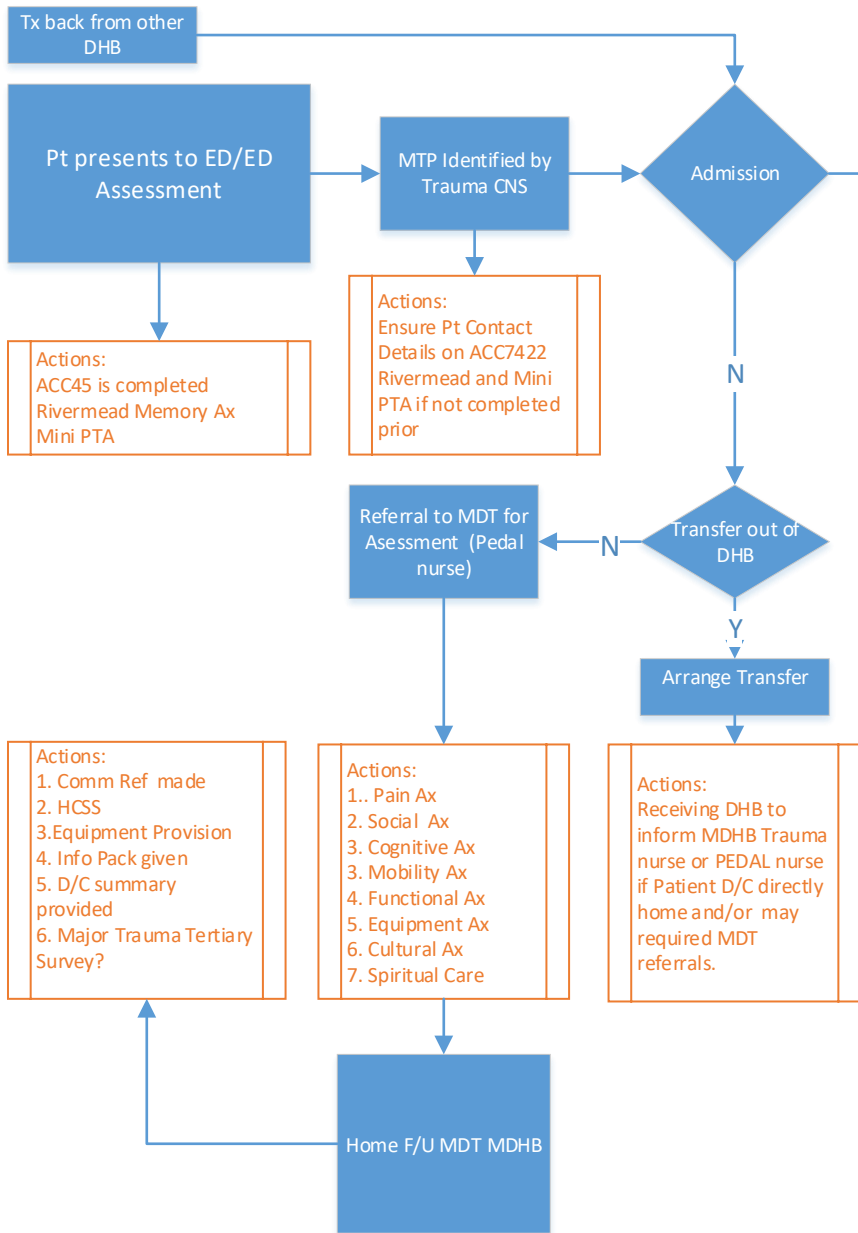
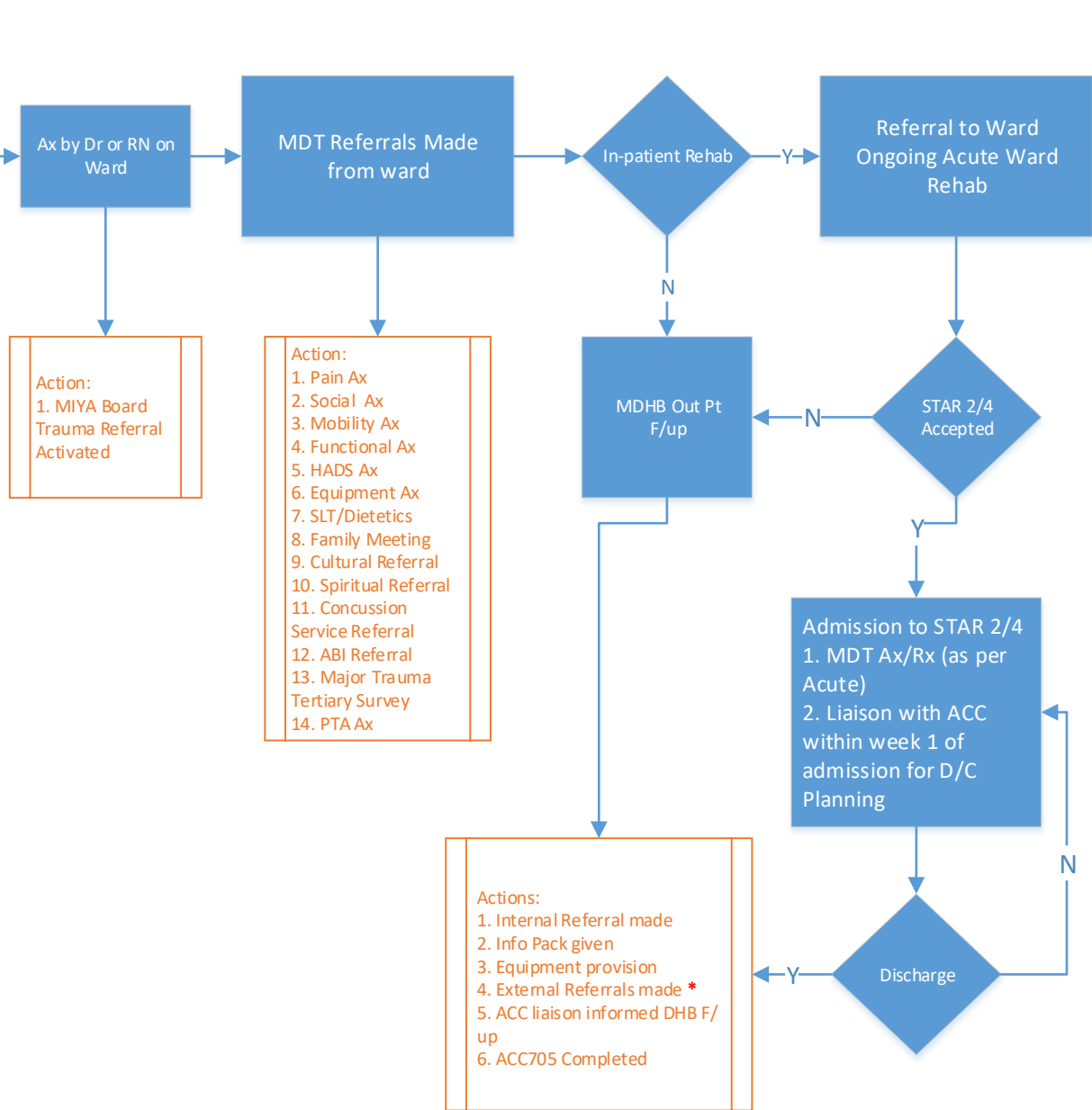


Section A: All Pts Presenting with Trauma



Section B: All Pts requiring Admission (Likely >ISS12)



NB: Clinical variation from identified pathway (ie: nil intervention from specific service) needs to be clearly documented and reasoned in patient file
 All associated documents/assessments can be found on the intranet/clinical/trauma pathway. * completed for patients transferred to other/external services.