

# Kapa Tāmariki

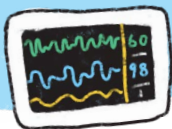
## Pūnaha Whakatūpatō Wawe (PEWS)



Mā rau ringa e oti ai

### Kapa hauora

Tirohia ai e mātou, kaute ai hoki i ngā tino tohu kia mōhio ki te hauora o āu tamariki



### Whānau Whānui

Nāu āu tamariki nā reira me kōrero mai ina kitea he mea rerekē. Mō ētahi atu kōrero mō PEWS pātaihia tō nēhi



### Mahi me mahi

Mā te kaute PEWS ka mōhio mātou me aha, he aha rānei te momo tautoko mā āu tamariki