



# Ti a bairea aron te mwawanako man te onaoraki

Taan mwakuri n te onaoraki a tangiria bwa kona mwawanako ma te namakin bwa a bane n reke kaekaan am titiraki ma tabeaiangam ake inanom. Te booma aio e na ibuobuoki. Tabeua a tia ni kaman maroroakinaki ma ngkoe ao e aki manga kainanoaki rinanoakia. Iai te mwawa ngkana ngkoe ma am whānau a tangiria ni kababanei aia kaoti ni koro iai.

## 1 Katauraoi nakon te mwawanako

- Ngkana iai am tabeaianga ke am titiraki ae tuai kaekaaki ibukin maurim, reitaki nakon am taokita ke am neeti.
- Tau mwiin araia ma rongorongoiia aomata ake kona reitaki mangaia ibukin maurim imwin kitanakin te onaoraki.

---



---



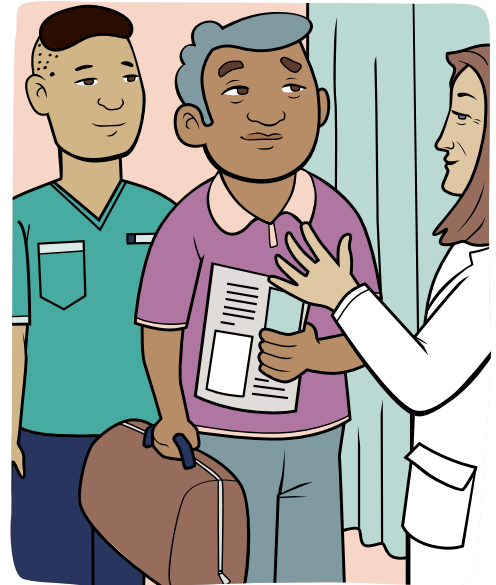
---



---

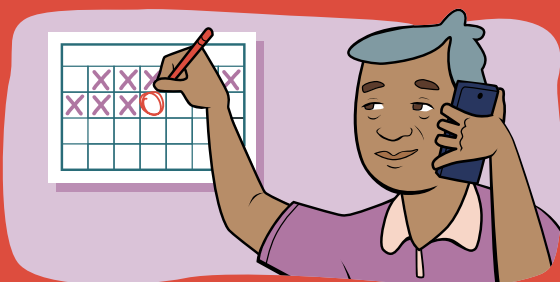


---



## 2 Ruruamwin am tai ake a tia ni bae

- Tuoa am tai ma am taokita ke te neeti ngkana ko kainanoa manga okim n ruamwin am tai ae e a tia ni bae ke karaoan riki tutuo, ao n te tabo ra (katoto, n te onaoraki ke iroun am (GP) taokita).
- Ngkana ko kainanoa ni kawara am taokita (GP) imwin mwawam man te onaoraki, kakoaua raoi bwa ko ata am tai ao n uringa ni kabaea am tai (appointment).
- Ngkana ko na kantaninga mwin am tutuo, kakaeta rongorongon aron karekeana (katoto, temanna ae na tareboniko ke boni ngkoe ae ko na tareboon).




---



---



---



---



---



---



---



---



---



---

